

INTEGRATED SOLAR STREET LIGHT ZXIL-XX

◆ DESCRIPTION

The Integrated Solar Street Light is the updated version of a solar street light system, it has integrated design, put solar panel, LED lamp, battery and controller all in one box, without any candle, easy to install and ship, easy to maintain or replacement, also it can serve longer life.



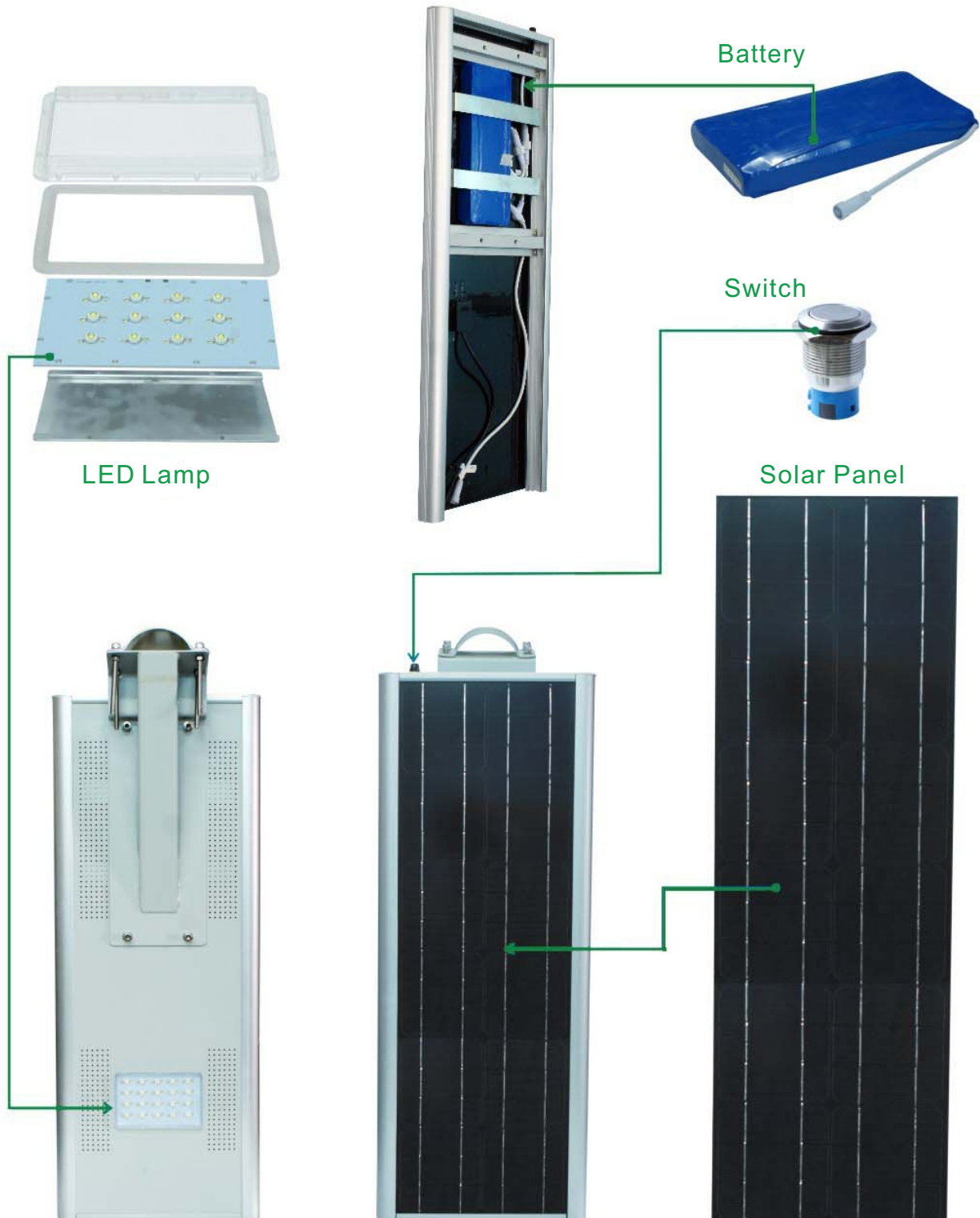
◆ FEATURES

- **Environment Friendly:** solar charging, no external power supply, energy saving and environmental protection.
- **All in One Integrated Design:** put solar panel, LED lamp, battery and controller all in one box, easy to install, no wiring necessary, easy to maintain or replacement.
- **LED Lighting:** brighter white LED lighting, the service life of up to 100000 hours.
- **Aluminum Shell:** LED components through the aluminum shell heat dissipation, reduce light attenuation, prolong life.
- **Differnt intelligent PIR Sensor with Timmer:** if anything moves after that period, it will senses, and lighting.

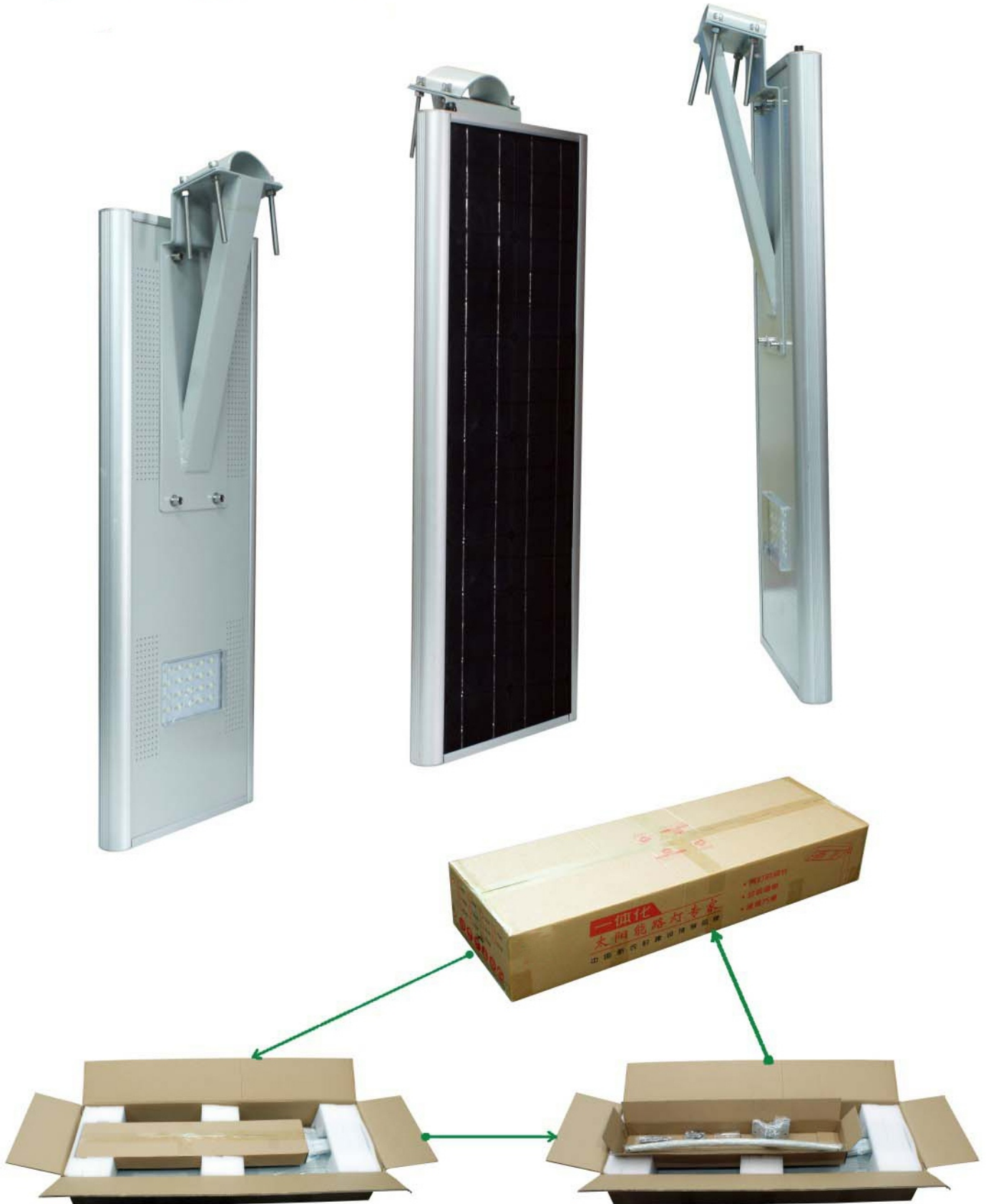
◆ FUNCTION & APPRANCE

Function	Picture
Integrated design	
Saving power mode	
Intelligent sensor	

◆ PRODUCT STRUCTURE

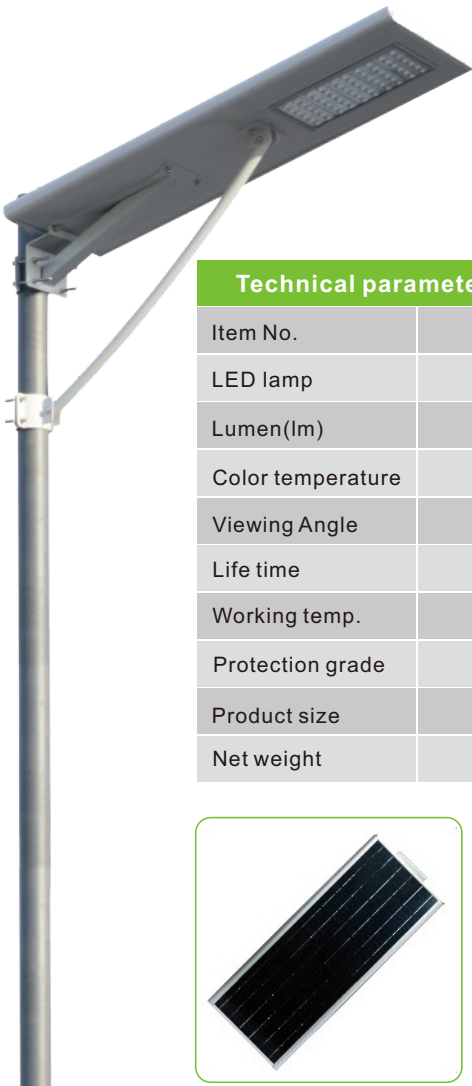


◆ DIFFERENT VIEWINGS & PACKING



60W

Integrated Solar Street Light



Technical parameters			
Item No.	ZCIL-60	Lamps material	Aluminum alloy
LED lamp	USA Bridgelux 12V-60W	Solar panel	18V-80W, mono
Lumen(lm)	6000-6600	Battery	LiFeO4, 12V42AH, 5 years
Color temperature	6500-7000K	Human body sense	Yes
Viewing Angle	120°	Charging time	5~6hours
Life time	50000hours	Disharging time	Saving power mode, ≥20hours
Working temp.	-20℃ ~+60℃	Mounting height	7~8m
Protection grade	IP65	Light space	20~25m
Product size	1160*455*430mm	Packing size	1190*460*450mm
Net weight	21kg	Gross weight	23kg



In Henan, China



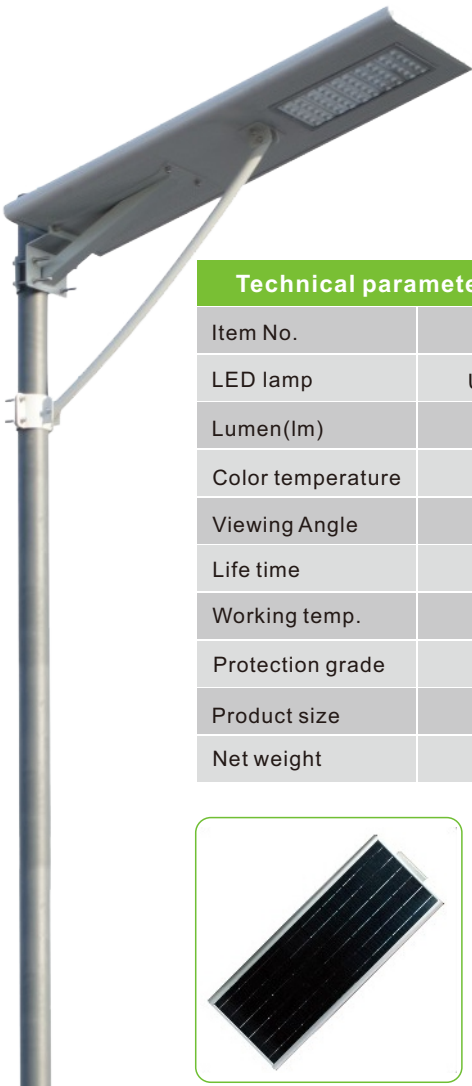
In Shanxi, China



In Africa

50W

Integrated Solar Street Light



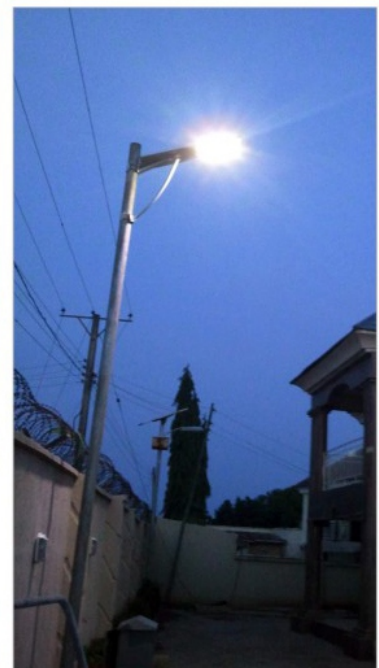
Technical parameters			
Item No.	ZCIL-50	Lamps material	Aluminum alloy
LED lamp	USA Bridgelux12V-50W	Solar panel	18V-80W, mono
Lumen(lm)	5000-5500	Battery	LiFeO4, 12V39AH, 5 years
Color temperature	6500-7000K	Human body sense	Yes
Viewing Angle	120°	Charging time	5~6hours
Life time	50000hours	Disharging time	Saving power mode, ≥20hours
Working temp.	-20℃ ~+60℃	Mounting height	7~8m
Protection grade	IP65	Light space	20~25m
Product size	1160*455*430mm	Packing size	1190*460*450mm
Net weight	20kg	Gross weight	22kg



Seaside, in Africa



In Shandong, China



Villa, in Africa

40W

Integrated Solar Street Light



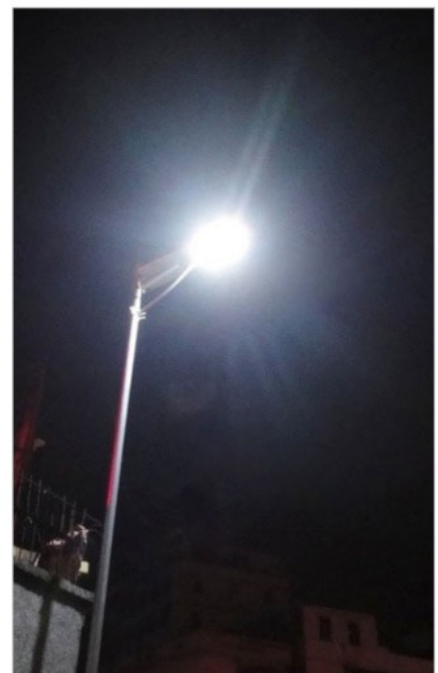
Technical parameters			
Item No.	ZCIL-40	Lamps material	Aluminum alloy
LED lamp	USA Bridgelux12V-40W	Solar panel	18V-60W, mono
Lumen(lm)	4000-4400	Battery	LiFeO4, 12V24AH, 5 years
Color temperature	6500-7000K	Human body sense	Yes
Viewing Angle	120°	Charging time	5~6hours
Life time	50000hours	Disharging time	Saving power mode, ≥20hours
Working temp.	-20℃ ~+60℃	Mounting height	7~8m
Protection grade	IP65	Light space	18~20m
Product size	1180*325*140mm	Packing size	1190*400*220mm
Net weight	19kg	Gross weight	20kg



Country road, in Anhui, China



Industry zone, Yunnan, China



Industry zone, Hunan, China(at night)

30W

Integrated Solar Street Light



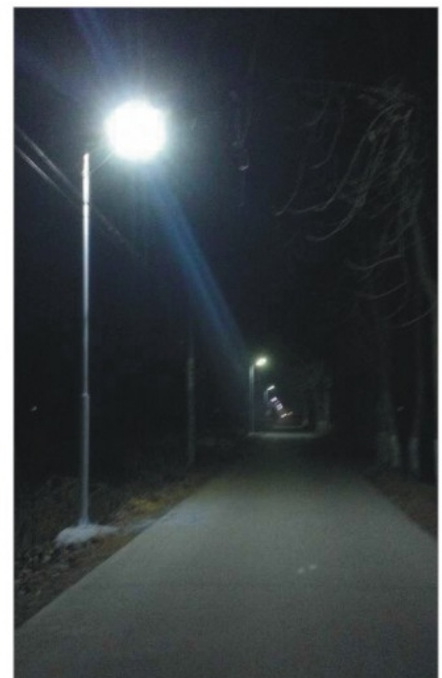
Technical parameters			
Item No.	ZCIL-30	Lamps material	Aluminum alloy
LED lamp	USA Bridgelux12V-30W	Solar panel	18V-60W, mono
Lumen(lm)	3000-3300	Battery	LiFeO4, 12V21AH, 5 years
Color temperature	6500-7000K	Human body sense	Yes
Viewing Angle	120°	Charging time	5~6hours
Life time	50000hours	Disharging time	Saving power mode, ≥20hours
Working temp.	-20℃ ~+60℃	Mounting height	6~7m
Protection grade	IP65	Light space	18~20m
Product size	1180*325*140mm	Packing size	1190*400*220mm
Net weight	18.5kg	Gross weight	19kg



New country side, Sichuan, China



New country side, Hubei, China



New contry side,Hunan, China(at night)

25W

Integrated Solar Street Light



Technical parameters			
Item No.	ZCIL-25	Lamps material	Aluminum alloy
LED lamp	USA Bridgelux12V-25W	Solar panel	18V-50W, mono
Lumen(lm)	2500-2750	Battery	LiFeO4, 12V21AH, 5 years
Color temperature	6500-7000K	Human body sense	Yes
Viewing Angle	120°	Charging time	5~6hours
Life time	50000hours	Disharging time	Saving power mode, ≥20hours
Working temp.	-20℃ ~+60℃	Mounting height	6~7m
Protection grade	IP65	Light space	18~20m
Product size	1180*325*140mm	Packing size	1190*400*220mm
Net weight	17.8kg	Gross weight	18kg



Country road, in Hainan, China



Seaside, in Africa



Hebei, China(at night)



25W

Integrated Solar Street Light

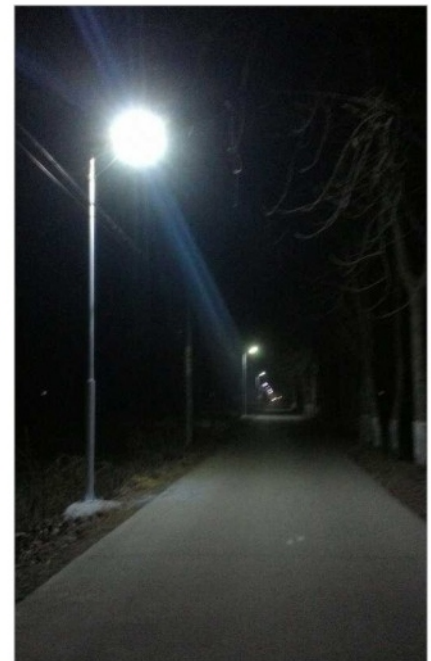
Technical parameters			
Item No.	ZCIL-25T	Lamps material	Galvanized iron, baking varnish
LED lamp	USA Bridgelux 12V-25W	Solar panel	18V-40W, mono
Lumen(lm)	2500-3000	Battery	LiFeO4, 12V21AH, 5 years
Color temperature	6500-7000K	Human body sense	Yes
Viewing Angle	120°	Charging time	5~6hours
Life time	50000hours	Disharging time	Saving power mode, ≥20hours
Working temp.	-20℃ ~+60℃	Mounting height	5~6m
Protection grade	IP65	Light space	18~20m
Product size	878*277*142mm	Packing size	965*330*195mm
Net weight	10.5kg	Gross weight	11.7kg



Ningxia, China



Gansu, China



Ningxia, China(at night)

20W

Integrated Solar Street Light



Technical parameters			
Item No.	ZCIL-20	Lamps material	Aluminum alloy
LED lamp	USA Bridgelux12V-20W	Solar panel	18V-45W, mono
Lumen(lm)	2000-2200	Battery	LiFeO4, 12V18AH, 5 years
Color temperature	6500-7000K	Human body sense	Yes
Viewing Angle	120°	Charging time	5~6hours
Life time	50000hours	Disharging time	Saving power mode, ≥20hours
Working temp.	-20℃ ~+60℃	Mounting height	6~7m
Protection grade	IP65	Light space	10~15m
Product size	1180*325*140mm	Packing size	1190*400*220mm
Net weight	17.8kg	Gross weight	18kg



Neimenggu, China



Seaside, in Singapore



Hubei, China(at night)

18W

Integrated Solar Street Light



Technical parameters			
Item No.	ZCIL-18	Lamps material	Aluminum alloy
LED lamp	USA Bridgelux 12V-18W	Solar panel	18V-40W, mono
Lumen(lm)	1800-1980	Battery	LiFeO4, 12V15AH, 5 years
Color temperature	6500-7000K	Human body sense	Yes
Viewing Angle	120°	Charging time	5~6hours
Life time	50000hours	Disharging time	Saving power mode, ≥20hours
Working temp.	-20℃ ~+60℃	Mounting height	5~6m
Protection grade	IP65	Light space	10~15m
Product size	920*325*140mm	Packing size	960*370*220mm
Net weight	13.5kg	Gross weight	14kg



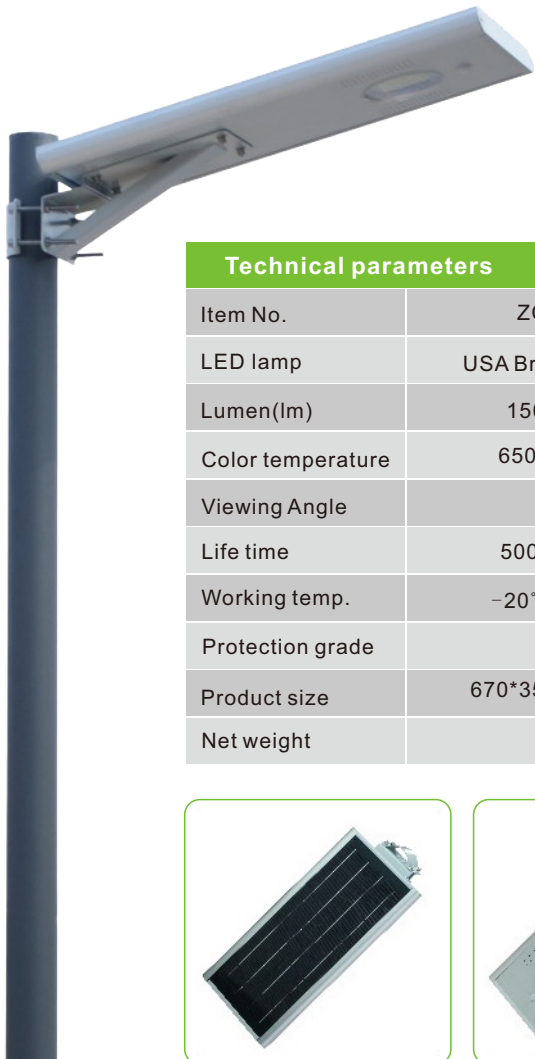
Ningxia, China



Cyprus



Hunan, China



15W

Integrated Solar Street Light

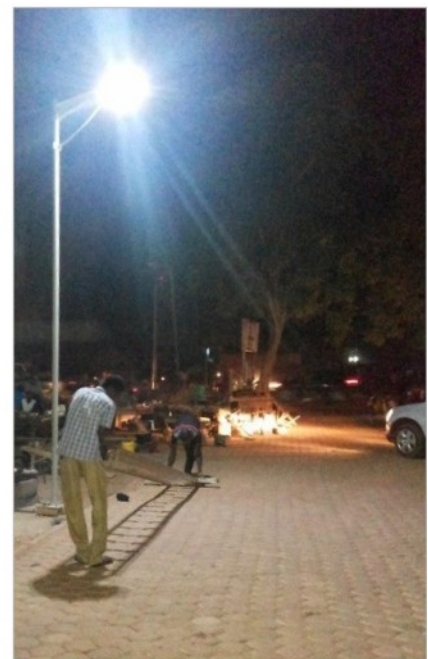
Technical parameters			
Item No.	ZCIL-15	Lamps material	Aluminum alloy
LED lamp	USA Brideglux12V-15W	Solar panel	18V-30W, mono
Lumen(lm)	1500-1650	Battery	LiFeO4, 12V10AH, 5 years
Color temperature	6500-7000K	Human body sense	Yes
Viewing Angle	120°	Charging time	5~6hours
Life time	50000hours	Disharging time	Saving power mode, ≥20hours
Working temp.	-20℃ ~+60℃	Mounting height	4~5m
Protection grade	IP65	Light space	10~15m
Product size	670*350*50mm	Packing size	750*450*150mm
Net weight	8.5kg	Gross weight	9kg



Shanxi new country side, China



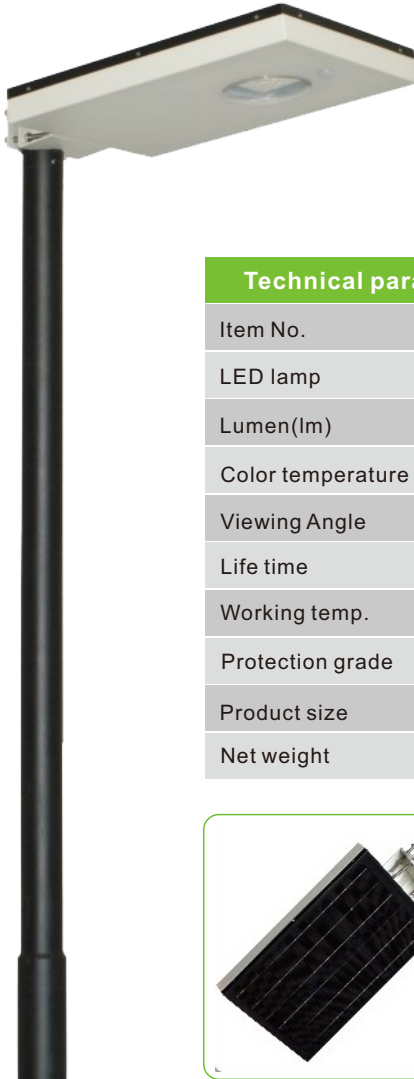
Henna residential, China



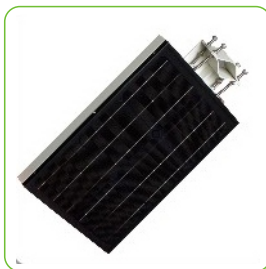
West Africa

15W

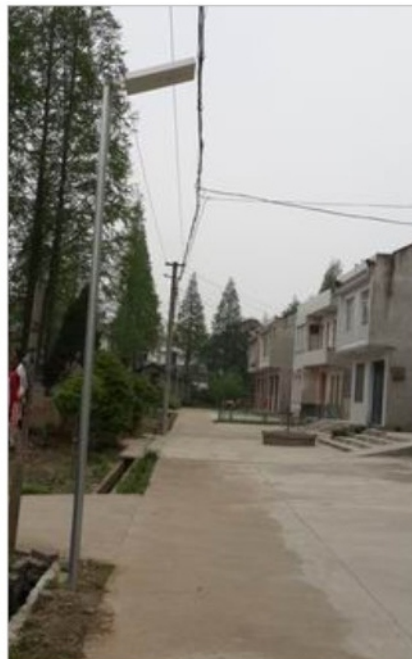
Integrated Solar Street Light



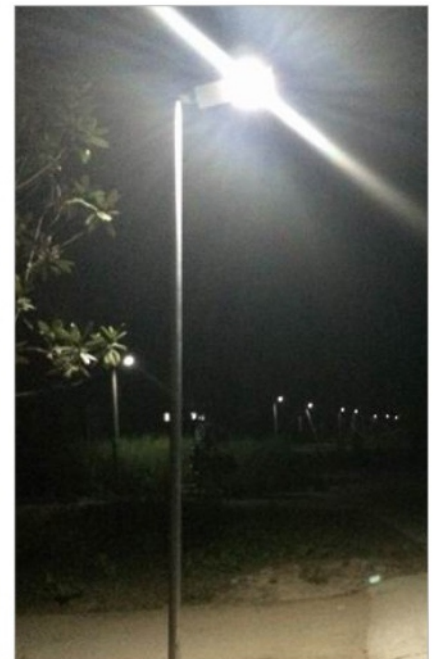
Technical parameters			
Item No.	ZCIL-15T	Lamps material	Galvanized iron,baking varnish
LED lamp	USA Brideglux12V-15W	Solar panel	18V-20W, mono
Lumen(lm)	1500-1650	Battery	LiFeO4, 12V6AH, 5 years
Color temperature	6500-7000K	Human body sense	Yes
Viewing Angle	120°	Charging time	5~6hours
Life time	50000hours	Disharging time	Saving power mode, ≥20hours
Working temp.	-20℃ ~+60℃	Mounting height	3~4m
Protection grade	IP65	Light space	10~15m
Product size	670*350*50mm	Packing size	560*380*130mm
Net weight	5.5kg	Gross weight	6.4kg



Guizhou, China



Gansu, China



Gansu, China(at night)

15W

Integrated Solar Street Light



Technical parameters			
Item No.	ZCIL-15R	Lamps material	Aluminum alloy
LED lamp	USA Brideglux12V-15W	Solar panel	18V-18W, mono
Lumen(lm)	1500-2000	Battery	LiFeO4, 12V6AH, 5 years
Color temperature	3000-7000K	Human body sense	Yes
Viewing Angle	120°	Charging time	5~6hours
Life time	50000hours	Disharging time	Saving power mode, ≥20hours
Working temp.	-20℃ ~+60℃	Mounting height	3~4m
Protection grade	IP65	Light space	10~15m
Product size	420*420*150mm	Packing size	450*450*180mm
Net weight	4.2kg	Gross weight	5kg



Xinjiang, China



Fujian, China



Fujian, China



12W

Integrated Solar Street Light

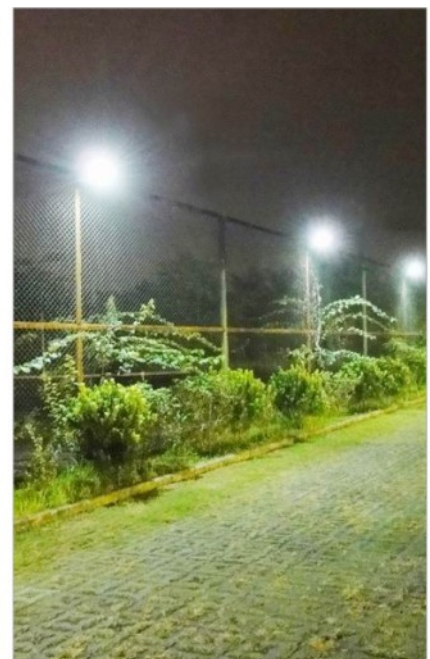
Technical parameters			
Item No.	ZCIL-12	Lamps material	Aluminum alloy
LED lamp	USA Bridgelux12V-12W	Solar panel	18V-20W, mono
Lumen(lm)	1200-1320	Battery	LiFeO4, 12V6AH, 5 years
Color temperature	6500-7000K	Human body sense	Yes
Viewing Angle	120°	Charging time	5~6hours
Life time	50000hours	Disharging time	Saving power mode, ≥20hours
Working temp.	-20℃ ~+60℃	Mounting height	3~4m
Protection grade	IP65	Light space	10~15m
Product size	465*320*50mm	Packing size	520*400*150mm
Net weight	6.8kg	Gross weight	7kg



Turkey



Europe



Shenzhen, China(at night)



8W

Integrated Solar Street Light

Technical parameters			
Item No.	ZCIL-8	Lamps material	Aluminum alloy
LED lamp	USA Bridgelux12V-8W	Solar panel	18V-18W, mono
Lumen(lm)	800-880	Battery	LiFeO4, 12V6AH, 5 years
Color temperature	6500-7000K	Human body sense	Yes
Viewing Angle	120°	Charging time	5~6hours
Life time	50000hours	Disharging time	Saving power mode, ≥20hours
Working temp.	-20℃ ~+60℃	Mounting height	3~4m
Protection grade	IP65	Light space	8~10m
Product size	465*320*50mm	Packing size	520*400*150mm
Net weight	6.8kg	Gross weight	7kg



Belgium



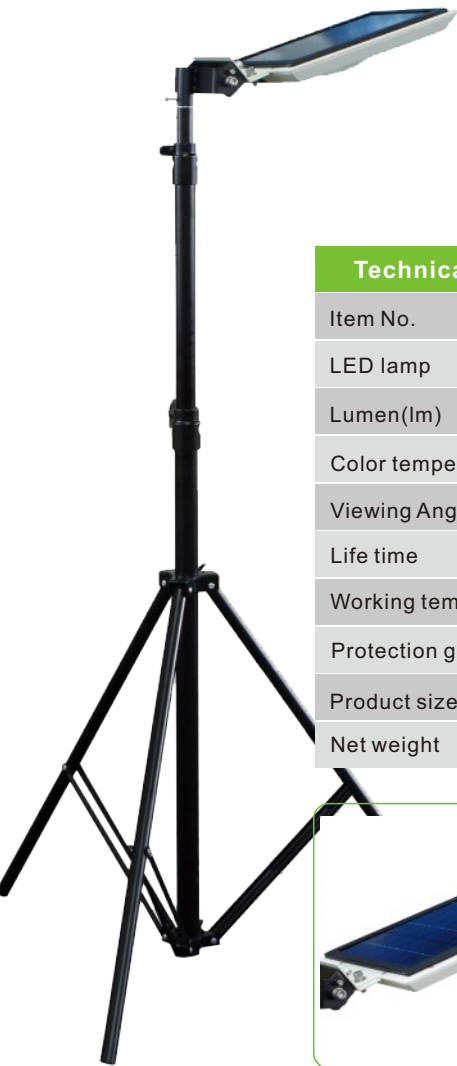
Sweden



Africa

6W

Integrated Solar Street Light



Technical parameters			
Item No.	ZCIL-6	Lamps material	Aluminum alloy
LED lamp	USA Bridgelux12V-6W	Solar panel	18V-12W, mono
Lumen(lm)	600-660	Battery	LiFeO4, 12V4AH, 5 years
Color temperature	6500-7000K	Human body sense	Yes
Viewing Angle	120°	Charging time	5~6hours
Life time	50000hours	Disharging time	Saving power mode, ≥20hours
Working temp.	-20℃ ~+60℃	Mounting height	2~3m
Protection grade	IP65	Light space	8~10m
Product size	326*241*60mm	Packing size	395*345*120mm
Net weight	2.5kg	Gross weight	3kg



Shenzhen, China



Guangzhou, China



Hubei, China